

Forjado 1 - NIVEL +3.00
Replanteo zona izquierda y derecha

Armadura base en losas macizas
SUP.: Ø12 cada 15 cm INF.: Ø12 cada 15 cm

Armadura base en nervios de reticular
Long. SUP.: 1Ø12 Trans. SUP.: 1Ø20
Long. INF.: 1Ø16 Trans. INF.: 1Ø20

Armadura base en ábacos (por cuadrícula)
SUP.: 2Ø16 INF.: 2Ø12

Technical drawing of a building floor plan showing two rectangular areas with dimensions and labels.

Top Area:

- Overall width: 18
- Overall height: 8
- Internal dimensions (from top-left corner):
 - Horizontal: 10 12 (170), 10 12 (395), 10 12 (300), 10 12 (268), 10 12 (340)
 - Vertical: 10 16 (260), 10 16 (345)

Bottom Area:

- Overall width: 23
- Overall height: 17
- Internal dimensions (from bottom-left corner):
 - Horizontal: 10 12 (85), 10 12c/15 (105), 10 12c/15 (100)
 - Vertical: 10 12c/15 (100), 10 12c/15 (90)

Labels:

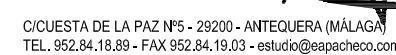
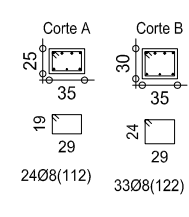
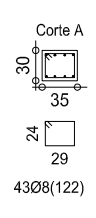
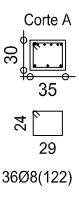
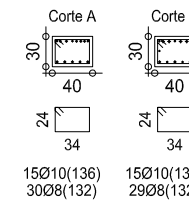
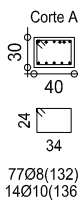
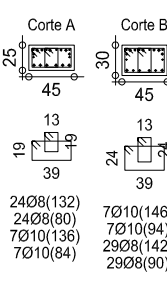
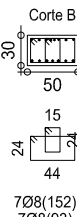
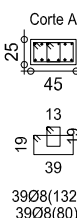
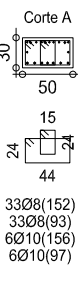
- A.B.: Ø12c/15
- A. Ø12c/15

Forjado 1
Armadura longitudinal+transv. INF.

Technical drawing of a rectangular plate with dimensions and hole specifications. The plate is labeled A.B.: 12c/15 and 12c/15. The overall dimensions are 24 (width) and 23 (height). The drawing shows a grid of holes with the following specifications:

- Top-left corner: 8 (width), 17 (height)
- Top-right corner: 9 (width), 15 (height)
- Bottom-left corner: 17 (width), 23 (height)
- Bottom-right corner: 24 (width), 24 (height)
- Hole specifications (diameter and position):
 - 10/12(320)
 - 10/2(190)
 - 10/12(210)
 - 10/12(85)
 - 10/12(190)
 - 10/12(195)
 - 10/12(15175)
 - 10/16(200)
 - 10/12c/15(175)
 - 10/16c/15(190)
 - 10/12c/15(150)

Forjado 1
Armadura longitudinal+transv. SUP.



ARQUITECTO/S J. PEDRO PACHECO ORELLANA
INMACULADA PACHECO MARISCAL
ENCARGANTE/S EXMO. AYUNTAMIENTO DE ANTEQUERA

ESCALA	1/100
REVISION	R2
EXP.	2011-017
FECHA	NOV/2012

EL PRESENTE DOCUMENTO ES COPIA DE SU ORIGINAL, DEL QUE SON AUTORES LOS TÉCNICOS ARRIBA FIRMANTES, SU UTILIZACION TOTAL O PARCIAL, ASI COMO CUALQUIER REPRODUCCION O CESION A TERCEROS, REQUERIRA LA PREVIA AUTORIZACION EXPRESA DE ESTOS, QUEDANDO, EN TODO CASO, PROHIBIDA CUALQUIER MODIFICACION UNILATERAL DEL MISMO.